

# JULIE PARTANSKY POND



## Overview

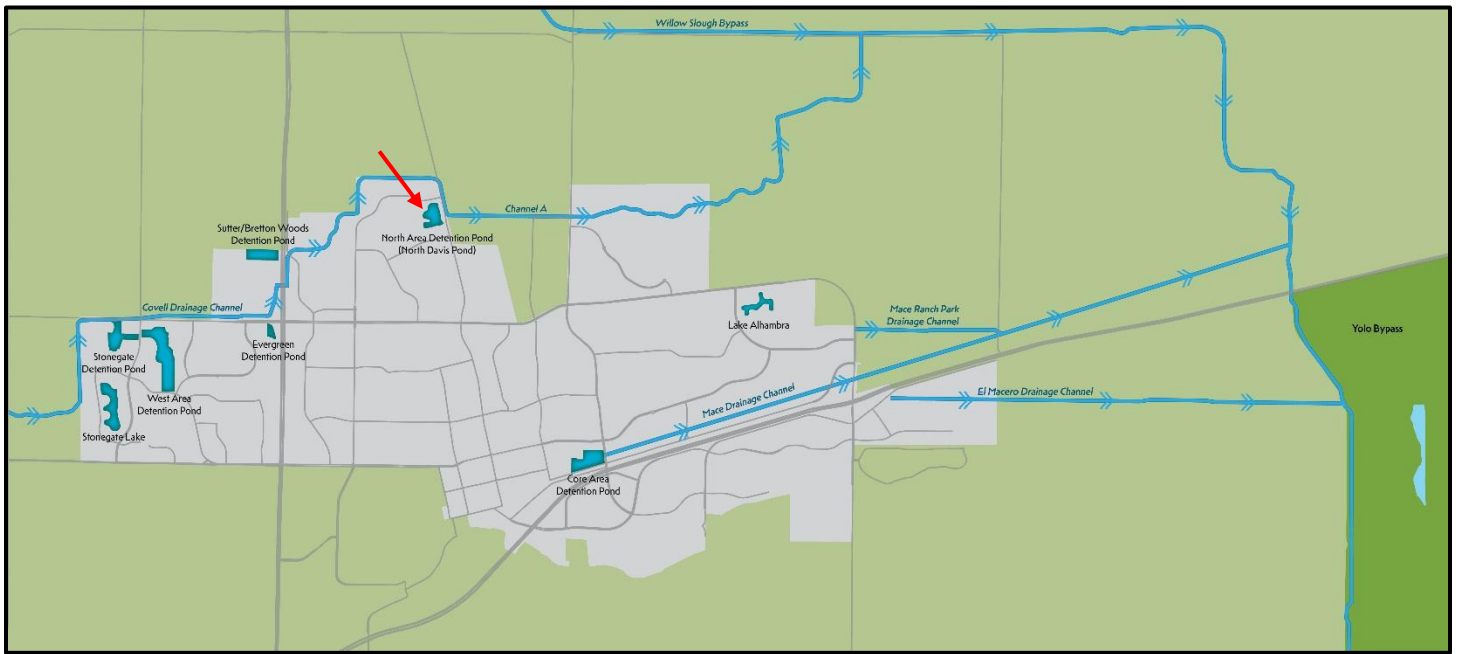
Even though they look like open spaces, the City's drainage channels, detention ponds and wetlands are not maintained by the City's Open Space Program. Instead, they are maintained by the City's Public Works Department because they are part of the City's vast stormwater drainage system that protects the City from flooding. In Davis, these drainage features all have natural soil surfaces and vegetation, which act as a natural water treatment filtration system and provide seasonal habitat for aquatic plants and wildlife. The stormwater flows into the Yolo Bypass and eventually into the Sacramento River and the San Francisco Bay.

Julie Partansky Pond (named after a former mayor) is a 14-acre stormwater detention pond in North Davis. Stormwater from North Davis collects in this pond and then is pumped into the North Davis Channel, where it connects with the Yolo Bypass. The pond also provides important seasonal wetland habitat and year-round wildlife habitat for many plant and animal species, especially native birds. The pond offers opportunities to enjoy aquatic habitat within an urban environment and a chance to see water birds.

Key information:

- The pond features paved and gravel trails around three sides of the pond (the pond itself is not publicly accessible), a wooden boardwalk and pond overlook, and interpretive panels.
- Dogs are allowed but only on-leash and on the designated paved and gravel trails.
- Bathrooms and potable water are available in the adjacent Northstar Park.
- The pond is open seven days a week, from dawn to dusk.

It is very important to keep the City's stormwater clean. When pollutants, such as dirt, trash, animal waste, oil, gas, fertilizers, pesticides, and metals, get into the City's stormwater, they can harm aquatic plants and animals like those in Julie Partansky Pond. Only rainwater belongs in a storm drain. A map showing the location of the stormwater detention pond can be found below.



## Things you can do at Julie Partansky Pond

- Take a walk/hike/run.
- Take a bike ride.
- View birds and wildlife.
- Explore the pond overlook.
- Learn about the area from the interpretive panels.
- Walk your dog on leash on the paved and gravel trails.

## Rules and Regulations

Even though Julie Partansky Pond is not an open space area, visitors should treat it like an open space area. Key rules and regulations at this location include:

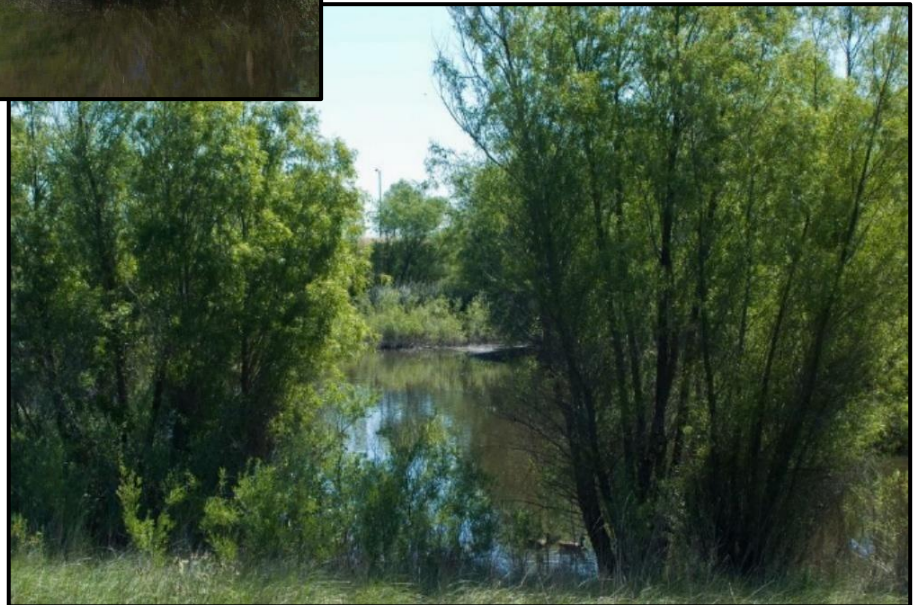
- Dogs are allowed at this location, but they must be leashed and remain on designated trails.
- Dogs are not allowed to be off-leash on the trails or in the habitat areas.
- Pedestrians must stay on designated trails and not walk into the habitat areas.
- Biking is allowed at this location, but only on the paved trail.
- No horseback riding.
- No watercraft.
- No hunting.
- No camping.
- No fires.
- No smoking.
- No drones.

## Directions

Julie Partansky Pond can be accessed via Anderson Road. There is a public parking lot off Anderson Road between Avocet Avenue and Sandpiper Drive. The pond can also be accessed via Northstar Park, Mercedes Avenue, Lindo Place, and Inca Place.

# Photo Gallery





Some photos courtesy of Marc Hoshovsky.