

**B STREET RESIDENCES
NEW APARTMENTS**
820-822 B STREET
DAVIS, CA

EXTERIOR ELEVATIONS

REVISION

proj.#
DATE 12-1-16

SHEET NUMBER

A6.0

8 OF 12 SHEETS



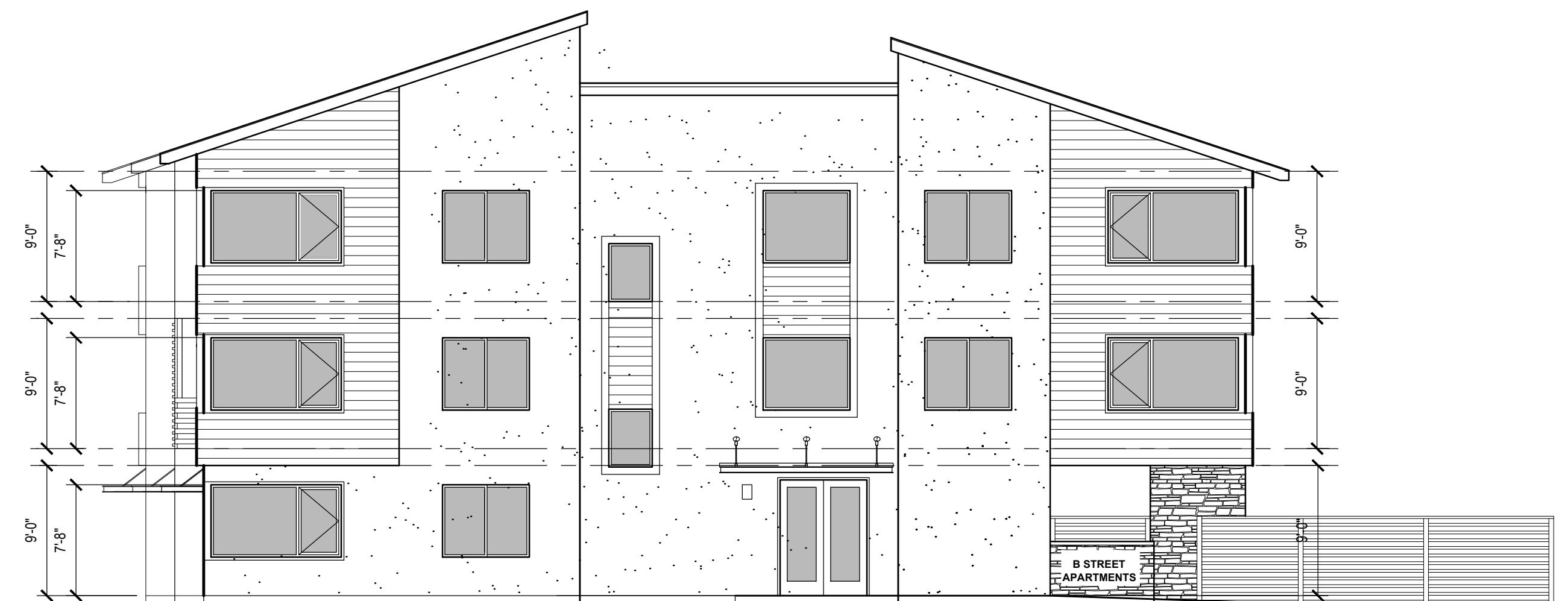
NORTH (SIDE)



EAST (REAR)



SOUTH (SIDE)



WEST (FRONT ON B STREET)

EXTERIOR ELEVATIONS