

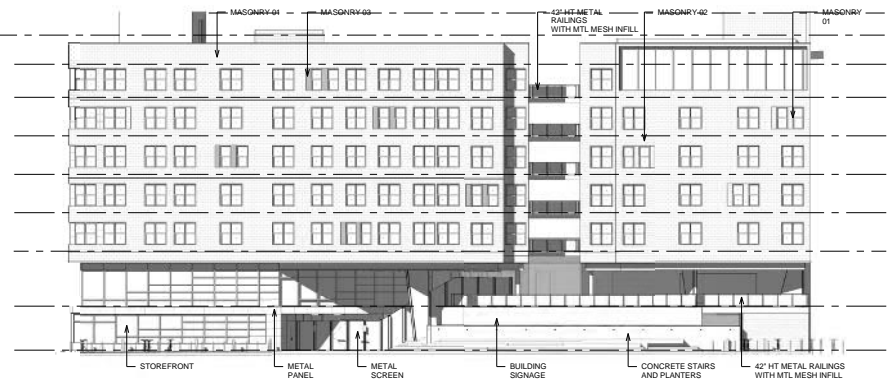
④ West  
1/16" = 1'-0"



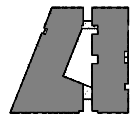
③ North  
1/16" = 1'-0"



② East  
1/16" = 1'-0"



① South  
1/16" = 1'-0"



⑤ KEYMAP  
1" = 100'-0"

DESIGN PROGRESS  
2018.04.19

# EXTERIOR ELEVATIONS - DAVIS LIVE

525 OXFORD, LLC

**MEEKS PARTNERS**  
16000 Memorial Drive  
Suite 1000  
Houston, Texas 77079  
281.556.8787

**A4.00**  
JOB NO. 1703