



DOWNTOWN PARKING MAP

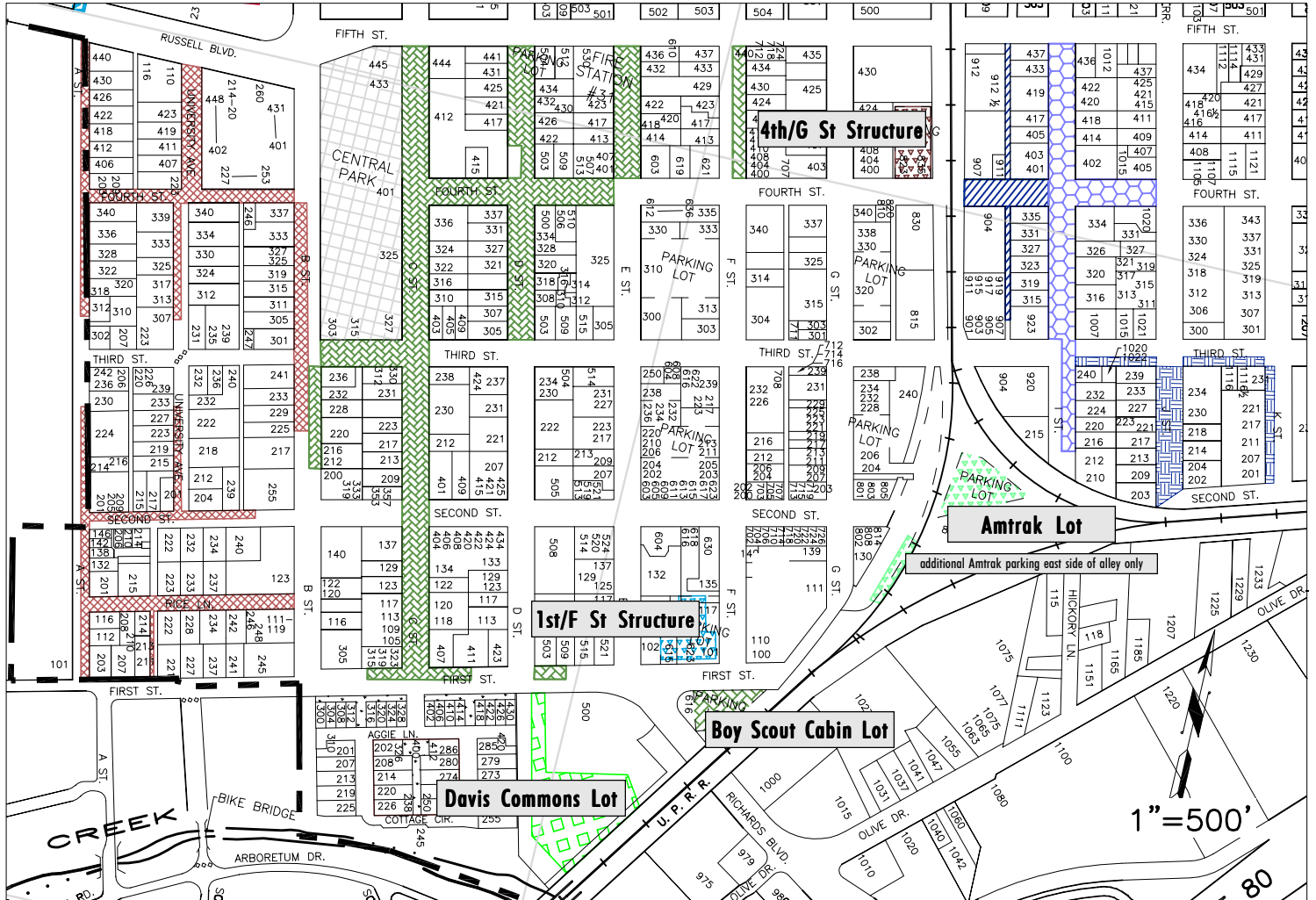
PERMIT PARKING ZONES for RESIDENTS & EMPLOYEES

"X" Permit – Allows Downtown employees to park all day without time limits in designated on- and off-street parking areas.

"D" Permit – Allows parking in the 1st St/F St Parking Structure located at 101 F St. (May only be purchased by commuters employed at businesses in Parking Assessment District No. 3 – the area bounded by 3rd St (south side) on the north, 1st St on the south, D St (east side) on the west, and H St on the east.)

"W" Permit – Available to businesses located in the "W" parking district. (May only be purchased by business owners or managers.)

4th St/G St Parking Structure – Assigned parking spaces are available for \$40 per month. (Contact Central Parking at 916-441-1074.)



No parking from 6AM to 10PM, Monday through Sunday, except with "R" Permit

No parking from 8AM to 10PM, Monday through Friday, except with "W" Permit

No parking from 8AM to 6PM, Monday through Friday, except with "X" Permit

No parking from 6AM to 10PM, Monday through Sunday, except with "X" Permit

No Parking from 8AM to 6PM, Monday through Friday, except with "T" Permit

3 hour Parking from 8AM to 6PM, Mon. through Fri., except with "D" Permit (all levels)

No Parking 5AM to 5PM except with "AMTRAK" Permit; except Sat., Sun., and Holidays

2 Hour Parking from 9AM to 6PM, Monday through Saturday, except with "Davis Commons" Permit

3 Hour Parking from 6:30AM to 5PM, Monday through Friday, in posted locations (Private Enforcement)

LOCATIONS ARE APPROXIMATE ONLY.
CHECK SIGNS AND STRIPING FOR PARKING RESTRICTIONS AT ALL TIMES.

A web version of this map is located at:
<http://www.cityofdavis.org/police/parkinginfo.cfm>