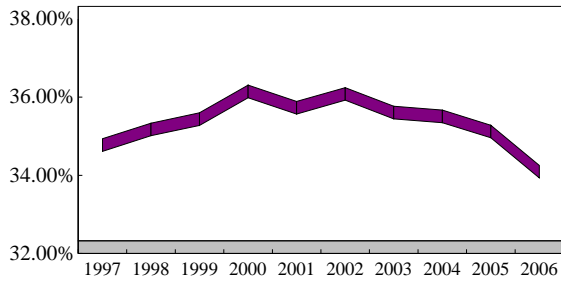
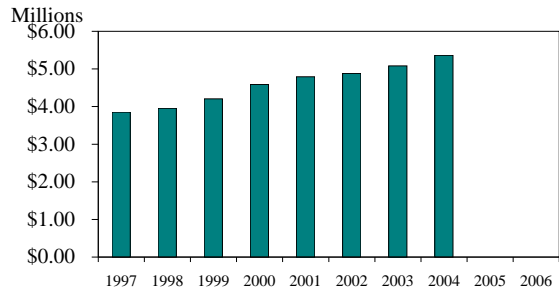


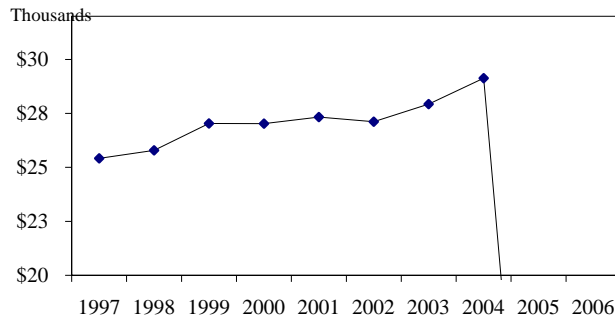
CITY OF DAVIS DEMOGRAPHIC AND ECONOMIC STATISTICS LAST TEN FISCAL YEARS



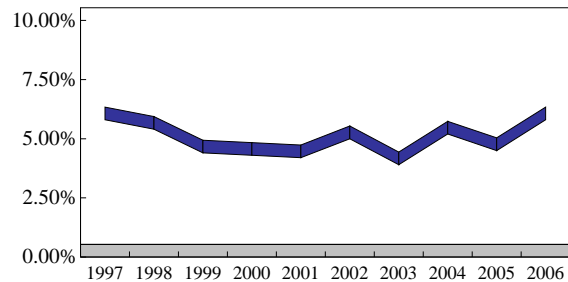
■ City Population as a % of County Population



■ Total Personal Income



◆ Per Capita Personal Income



■ Unemployment Rate (%)

Fiscal Year	City Population	Total Personal Income	Per Capita Personal Income	Unemployment Rate (%)	Yolo County Population	City Population % of County
1997	53,200	\$3,850,700	\$25,418	5.8%	153,700	34.61%
1998	54,900	3,953,600	25,791	5.4%	156,800	35.01%
1999	56,018	4,206,288	27,037	4.4%	158,797	35.28%
2000	58,629	4,589,286	27,030	4.3%	162,928	35.98%
2001	60,201	4,792,716	27,332	4.2%	169,265	35.57%
2002	63,324	4,880,859	27,114	5.0%	176,289	35.92%
2003	64,259	5,080,810	27,932	3.9%	181,291	35.45%
2004	64,700	5,364,000	29,133	5.2%	183,042	35.35%
2005	64,500	(A)	N/A	4.5%	184,500	34.96%
2006	64,585	(A)	N/A	5.8%	190,344	33.93%

Source: California State Department of Finance

Note: (A) Information not available