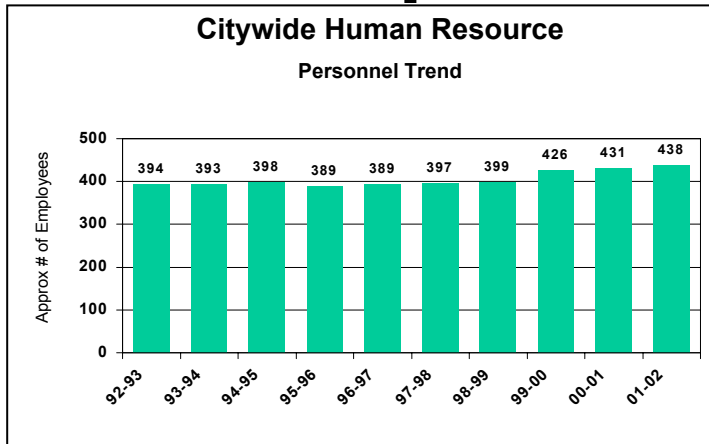


The City Organization

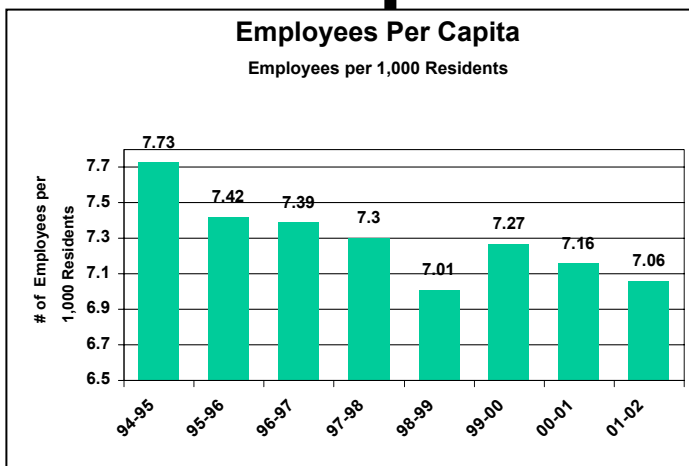
A citywide organizational chart appears on the following two pages, while the graphs below summarize historical citywide staffing changes. The first graph shows a ten-year personnel trend for the city, combining the following positions: all Regular Full Time, Regular Part Time and Special Funded. Temporary positions are not included in this discussion.



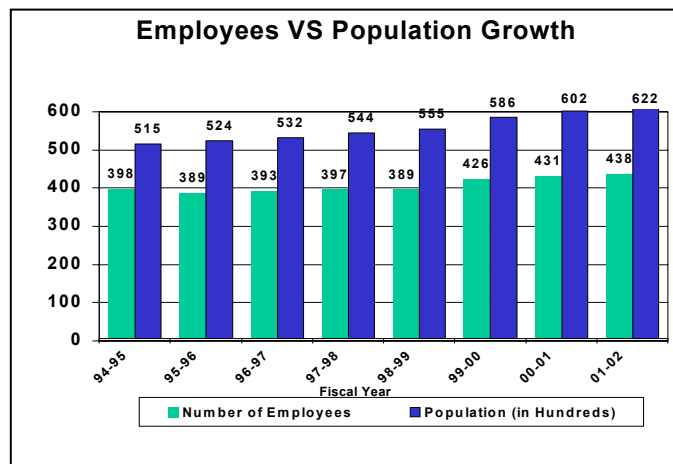
During the past year, several departments were reorganized resulting in deleting of 4 positions and reclassification and promotions of various other positions.

In addition to these reorganizations Council approved the addition of 10 new positions in the final budget. They included 1 Public Works Maintenance Worker II for the water division, 1 Custodian II for the new police facility, 1 Building Maintenance Worker II for the police facility and Arroyo park, 1 Parks Maintenance Worker II for Arroyo park, 1 Pool Maintenance Worker II for Arroyo pool and 1 Program Aide for a new child care grant that the city received. The Police Department underwent a departmental audit, which lead to a

reorganization of the records and communications division. A number of job titles and duties were changed and 4 new positions were added. The positions include 1 Lead Public Safety Dispatcher, 1 Police Senior Records Specialist, 1 Records Supervisor and 1 Police Records Specialist II.



The next two graphs compare the number of employees over time relative to the city's increasing population.



City Wide Human Resources

Position Title	2000/01 FTE	2001/02 FTE	Annual Salary Range	
			Step 1	Step 5
Accounting Manager	1	1	67,798	82,409
Administrative Aide	1	0	33,566	40,799
Administrative Aide - Parking Enforcement	1	0	33,566	40,799
Administrative Aide-Conf	2	2	33,566	40,799
Administrative Analyst I	0	1	39,187	47,632
Administrative Analyst II	5	2	43,102	52,391
Administrative Secretary - Conf	4	4	33,566	40,799
Administrative Services Manager	1	1	67,798	82,409
Assistant Chief Building Official	1	1	55,154	67,040
Assistant City Engineer	0	1	67,377	81,898
Assistant City Manager	1	1	89,107	108,310
Assistant Engineer	2	2	49,126	59,714
Assistant Planner	1	1	41,071	49,921
Assistant Planner - Code Compliance	1	1	41,071	49,921
Assistant to the Director	2	3	51,724	62,870
Associate Civil Engineer	5	3	54,039	65,685
Associate Planner	2	2	45,178	54,913
Associate Planner - Downtown Coordinator	1	0	47,436	57,659
Bicycle/Pedestrian Coordinator	1	1	45,178	54,913
Budget Analyst II	1	0	43,102	52,391
Building and Planning Technician I	0	1	31,333	38,086
Building and Planning Technician II	2	1	34,467	41,894
Building Inspector II	3	3	41,704	50,692
Building Maintenance Crew Supervisor	1	1	36,432	44,283
Building Maintenance Worker I	1	1	28,800	35,006
Building Maintenance Worker II	2	3	31,680	38,507
Chief Building Inspector	1	1	59,685	72,547
City Clerk	1	1	64,570	78,474
City Electrician	1	1	57,719	70,157
City Engineer	1	1	77,484	94,182
City Manager	1	1	113,725	113,725
Communications Dispatch Supervisor	1	0	43,035	52,309
Communications Dispatcher I	5	0	30,927	37,592
Communications Dispatcher II	6	0	34,020	41,351
Community Partnership Coordinator	1	1	51,947	63,141
Community Service Supervisor	4	5	42,720	51,926
Community Services Administrator	1	1	67,798	82,409
Community Services Program Coordinator	4	1	35,600	43,272
Community Services Superintendent	0	1	58,955	71,600
Community Services Theater Technician	1	1	35,600	43,272
Community Services Video Technician	1	1	25,218	30,653
Computer Support Tech I	1	0	30,608	37,204
Custodial Crew Supervisor	1	1	34,928	42,456
Custodian II	5	6	25,218	30,653
Customer Service Coordinator	1	0	31,675	38,501
Economic Development Coordinator	1	1	51,947	63,141
Electrical Inspector II	2	2	41,704	50,692

The City Organization

Electrician	3	4	43,643	53,049
Electrician's Helper	2	1	31,174	37,892
Engineering Assistant	4	4	44,661	54,285
Engineering Technician I	0	1	31,579	38,385
Engineering Technician II	2	1	34,737	42,223
Environmental Resource Specialist	1	1	31,891	38,765
Environmental Resource Supervisor	0	1	36,675	44,579
Equipment Maintenance Crew Supervisor	1	1	41,156	50,026
Equipment Mechanic	3	3	35,788	43,501
Evid/Property/Crime Scene Tech	1	1	34,020	41,351
Facilities Superintendent	1	1	58,955	71,660
Finance Director	1	1	81,358	98,891
Financial Analyst II	0	3	43,101	52,390
Financial Assistant II	8	8	27,544	33,479
Financial Associate	1	1	30,298	36,827
Financial Associate - Conf.	1	1	30,298	36,827
Financial Coordinator	0	1	34,843	42,351
Financial Supervisor - Conf.	3	2	40,069	48,704
Fire Business Manager	1	1	67,798	82,409
Fire Captain	9	9	54,491	66,233
Fire Chief	1	1	88,688	107,801
Fire Division Chief	3	3	73,907	89,835
Firefighter I	5	7	44,225	53,757
Firefighter II	31	29	48,653	59,137
General Services Administrator	1	1	67,798	82,409
Human Resources Analyst I	1	1	39,187	47,632
Human Resources Technical - Conf	2	2	33,566	40,799
Information Technology Administrator	1	1	67,798	82,409
Junior Planner	1	1	35,714	43,410
Lead Public Safety Dispatcher	0	2	37,422	45,486
Mediation/Dispute Resolution Officer	1	1	47,420	57,640
MIS Senior System Analyst	3	3	59,517	72,344
MIS System Analyst- Conf	1	1	47,049	57,189
MIS System Specialist - Conf	2	3	54,107	65,767
Office Assistant II	18	13	25,218	30,653
Office Assistant II - Conf.	4	3	25,218	30,653
Open Space Resource Coordinator	1	0	47,436	57,659
Open Space Resource Planner	0	1	51,947	63,141
Operations Administrator	1	2	67,798	82,409
Park Maintenance Crew Supervisor	5	5	34,928	42,456
Park Maintenance Worker I	5	4	27,611	33,562
Park Maintenance Worker II	13	11	30,373	36,919
Parking Enforcement Officer	3	3	28,115	34,174
Parks & Community Services Director	1	1	81,358	98,891
Parks & Open Space Administrator	1	1	67,798	82,409
Parks Supervisor	1	1	43,301	52,633
Planning and Building Director	1	1	81,358	98,891
Planning and Building Services Coordinator	0	1	45,178	54,913
Planning and Redevelopment Administrator	1	1	62,727	76,246
Plans Examiner II	2	2	41,704	50,692
Police Captain	2	2	70,735	85,978

The City Organization

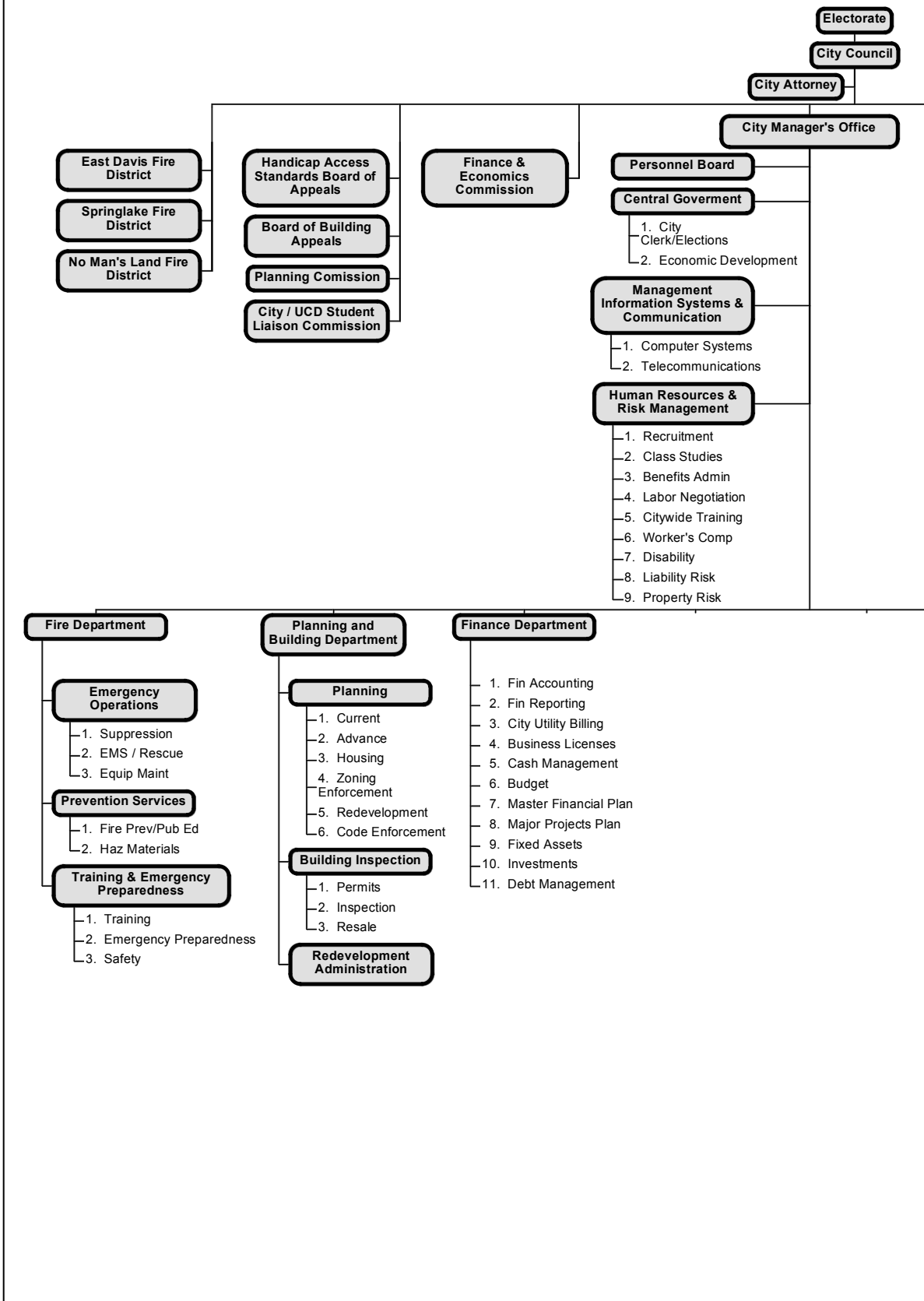
Police Chief	1	1	88,688	107,801
Police Lieutenant	3	3	64,304	78,162
Police Officer	39	39	43,888	53,346
Police Records Specialist II	0	5	25,461	30,948
Police Secretary	1	1	30,808	37,447
Police Senior Records Specialist	0	1	28,007	34,043
Police Sergeant	9	9	51,443	62,530
Police Service Specialist	4	5	28,115	34,174
Pool Maintenance Crew Supervisor	1	1	36,675	44,579
Pool Maintenance Worker I	0	1	28,992	35,240
Pool Maintenance Worker II	0	2	31,891	38,765
Principal Engineer	1	1	64,529	78,435
Principal Utility Program Supervisor	1	1	52,731	64,095
Program Aid-Courier	1	1	22,926	27,866
Promotions Manager	1	1	49,128	59,715
Public Safety Dispatch Supervisor	0	2	43,035	52,309
Public Safety Dispatcher I	0	3	30,927	37,592
Public Safety Dispatcher II	0	6	34,020	41,351
Public Works Crew Supervisor	5	6	34,928	42,456
Public Works Director	1	1	81,358	98,891
Public Works Inspector	2	2	41,704	50,692
Public Works Maintenance Worker I	4	4	27,611	33,562
Public Works Maintenance Worker II	17	18	30,373	36,919
Public Works Supervisor	1	1	43,301	52,633
Records and Communications Manager	1	0	40,986	49,818
Records Supervisor	0	1	35,566	43,231
Redevelopment Project Manager	0	1	50,915	61,888
Residential Resale Inspector I	1	1	37,913	46,083
Residential Resale Inspector II	1	1	41,704	50,692
Revenue Analyst	1	0	43,102	52,391
Secretary	1	1	30,514	37,090
Secretary - Conf	0	1	30,514	37,090
Secretary to the City Manager- Conf	1	1	36,922	44,879
Senior Building Inspector	1	1	47,960	58,296
Senior Civil Engineer	2	1	55,438	67,385
Senior Electrician	1	1	50,190	61,006
Senior Office Assistant	1	2	27,740	33,718
Senior Office Assistant - Conf.	1	1	27,740	33,718
Senior Parks Supervisor	2	2	50,322	61,168
Senior Planner	1	0	51,954	63,150
Senior Planner - Management	0	1	51,947	63,141
Senior Public Works Supervisor	3	3	50,322	61,168
Senior Utility Program Technician	1	2	38,210	46,446
Senior Utility Resource Specialist	1	1	51,359	62,428
Small Tree Specialist	1	1	33,410	40,610
Sports Field Maintenance Specialist	0	1	31,891	38,765
Stock Clerk	1	1	24,511	29,793
Storekeeper	1	1	28,713	34,901
Support Services Technician	1	1	28,713	34,901
Technical Service Supervisor	0	1	35,566	43,231
Transportation Crew Supervisor	1	1	36,675	44,579

Tree Maintenance Crew Supervisor	1	1	35,437	43,074
Tree Trimmer II	2	2	30,815	37,456
Utility Program Coordinator	1	1	43,942	53,413
Utility Program Technician II	1	0	34,737	42,223
Utility Resource Specialist	1	1	44,661	54,285
Volunteer Coordinator	1	1	33,566	40,799
Wastewater Administrator	1	1	67,798	82,409
Water & Sewer Crew Supervisor	1	0	34,928	42,456
Water & Sewer Service Worker	1	1	31,891	38,765
Water Meter Coordinator	1	1	30,373	36,919
Water Production Crew Supervisor	1	1	36,675	44,579
Water Program Crew Supervisor	1	1	36,675	44,579
Water System Maintenance Worker	2	2	31,891	38,765
Water System Operator	2	2	31,891	38,765
Wildlife Resource Specialist	1	1	44,661	54,285
WWTP Laboratory Analyst	2	2	36,985	44,956
WWTP Lead Operator	4	4	39,547	48,070
WWTP Maintenance Technician	2	2	35,952	43,700
WWTP Operator I	1	0	32,684	39,727
WWTP Operator II	0	1	35,952	43,700
WWTP Senior Laboratory Analyst	1	1	40,683	49,451
WWTP Senior Maintenance Technician	1	1	39,547	48,070
WWTP Senior Operator	2	2	43,502	52,877
WWTP Supervisor	1	1	50,027	60,809
Youth Intervention Specialist	1	1	30,927	37,592
Total Full-time FTE'S	386	392		
Administrative Analyst I	1	1	39,187	47,632
Child Care Program Assistant	0	1	25,218	30,653
Child Care Referral Coordinator	0	1	33,496	40,715
Child Care Supervisor	0	2	40,196	48,858
Community Service Program Coordinator	2	0	35,600	43,272
Eligibility Worker I	0	6	25,218	30,653
Eligibility Worker II	0	2	27,740	33,718
Financial Assistant I	2	2	25,040	30,436
Financial Assistant II	1	0	27,544	33,479
Financial Associate	1	1	30,298	36,827
Financial Supervisor	0	1	40,069	48,704
Lead Eligibility Worker	0	3	31,901	38,776
Office Assistant II	1	0	25,218	30,653
Paratransit Coordinator	0	1	35,600	43,272
Paratransit Supervisor	0	1	42,720	51,926
Program Aide	5	0	22,926	27,866
Program Assistant	11	1	25,218	30,653
Senior Child Care Supervisor	0	1	46,225	56,186
Senior Office Assistant	0	1	27,740	33,718
Social Services Administrator	1	1	67,798	82,409
Total Special Funded Full-time FTE'S	25	26		

Administrative Aide	0.75	0.75	33,566	40,799
Community Services Program Coordinator	3.25	3.5	35,600	43,272
Community Services Video Technician	0.5	0.5	25,218	30,653
Custodian I	1.25	0.75	22,926	27,866
Custodian II	0.5	0.5	25,218	30,653
Police Service Specialist	0.75	0	28,115	34,174
Program Assistant	0.5	0.5	25,218	30,653
Public Safety Dispatcher I	0	1	30,927	37,592
Recycling Coordinator	0.5	0.5	45,178	54,913
Total Regular Part-time FTE's	8	8		
Eligibility Worker II	0	0.75	27,740	33,718
Financial Assistant I	0.5	1	25,040	30,436
Paratransit Vehicle Operator	0	1	25,218	30,653
Program Aide	1	0.5	22,926	27,866
Program Assistant	1.25	0.75	25,218	30,653
Total Special Funded Part-time FTE'S	2.75	4		
Bike Enforcement Officer	0.5	0.5	23,435	28,486
Building Inspector II	2	0.82	41,704	50,692
Community Service Officer - Budget	2.74	3	21,627	26,288
Community Service Special IV	49.05	57.34	15,651	19,024
Community Service Special V	4.42	4.42	17,255	20,974
Community Service Specialist III	1.47	1.47	14,196	17,255
Computer Support Technician	1.5	0.58	30,608	37,204
Custodial Aide II	1.2	1.2	20,974	25,494
Electrician	0.64	0.5	43,643	53,049
Engineering Intern	1.5	1.44	19,385	23,576
Intern	1.8	1.8	15,065	18,299
Maintenance Aide II	7.96	8.61	20,974	25,494
Office Assistant I	0.5	0.48	22,926	27,866
Office Assistant II	1.5	0.94	25,218	30,653
Park Maintenance Worker II	0.48	0.48	30,373	36,919
Program Aide	0.53	0.53	22,926	27,866
Public Works Maintenance Worker I	1.2	1.2	27,611	33,562
Total Temporary Part-time FTE's	78.94	85.26		
Total City-Wide Human Resources	500.69	515.26		



City of Davis



Organizational Chart

